

# Chem-Impex International, Inc.

---

**Tel:** (630) 766-2112

**E-mail:** sales@chemimpex.com

**Shipping and Correspondence:**

935 Dillon Drive

Wood Dale, IL 60191

**Fax:** (630) 766-2218

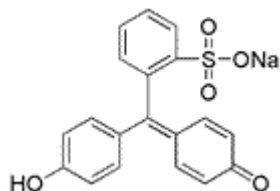
**Web site:** www.chemimpex.com

**Manufacturing site:**

825 Dillon Drive

Wood Dale, IL 60191

---



## Product Specifications

<b>Catalogue Number</b>	00480
<b>Product</b>	<b>Phenol red sodium salt</b> Phenolsulphonephthalein sodium salt
<b>CAS Number</b>	34487-61-1
<b>Molecular Formula</b>	C <sub>19</sub> H <sub>13</sub> O <sub>5</sub> SNa
<b>Molecular Weight</b>	376.36

---

<b>Appearance</b>	Bright red to dark red solid
<b>Clarity &amp; Color</b>	Clarity : To pass test
<b>Solubility</b>	1 g in 1300 mL water
<b>Visual Transition Range</b>	From pH 6.8 (yellow) to pH 8.2 (Red)
<b>Grade</b>	ACS reagent
<b>Storage</b>	Store at RT

**For Laboratory Use Only**