

# Chem-Impex International, Inc.

---

**Tel:** (630) 766-2112

**E-mail:** sales@chemimpex.com

**Shipping and Correspondence:**

935 Dillon Drive

Wood Dale, IL 60191

**Fax:** (630) 766-2218

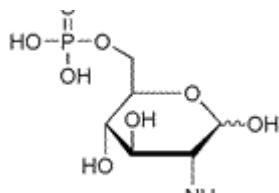
**Web site:** www.chemimpex.com

**Manufacturing site:**

825 Dillon Drive

Wood Dale, IL 60191

---



## Product Specifications

<b>Catalogue Number</b>	00457
<b>Product</b>	<b>D-Glucosamine 6-phosphate</b>
<b>CAS Number</b>	3616-42-0
<b>Molecular Formula</b>	C <sub>6</sub> H <sub>14</sub> NO <sub>8</sub> P
<b>Molecular Weight</b>	259.2

---

<b>Appearance</b>	White powder
<b>Clarity &amp; Color</b>	Color : Almost colorless
<b>Solubility (Turbidity)</b>	Clear to slightly hazy at 50 mg/mL in water
<b>Water Content (Karl Fisher)</b>	≤ 10%
<b>Inorganic Impurities</b>	Phosphorus : ≤ 0.1%
<b>Related Substances</b>	Phosphorus : 11.5 - 12.3% anhydrous basis
<b><sup>1</sup>H NMR</b>	Conforms to structure
<b>Purity by TLC</b>	≥ 98%
<b>Storage</b>	Store at 0 - 8 °C

**For Laboratory Use Only**