

# Chem-Impex International, Inc.

---

**Tel:** (630) 766-2112

**E-mail:** sales@chemimpex.com

**Shipping and Correspondence:**

935 Dillon Drive

Wood Dale, IL 60191

**Fax:** (630) 766-2218

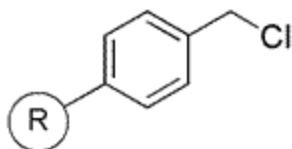
**Web site:** www.chemimpex.com

**Manufacturing site:**

825 Dillon Drive

Wood Dale, IL 60191

---



## Product Specifications

**Catalogue Number** 00447  
**Product** **Chloromethylated polystyrene  
(0.8-1.5 meq/g, 100-200 mesh)**

Merrifield resin

**CAS Number** 55844-94-5

---

**Appearance** Pale to yellow to white polymer beads  
**Swelling in DCM** 5.0-9.0 mL/g  
**Swelling in DMF** 4.0-7.0 mL/g  
**Infrared Spectrum** Conforms to structure  
**Loss on Drying**  $\leq 1.0\%$  ( $105 \pm 3$  °C, 1.5h)  
**Mesh Size** 100-200 mesh  
**Substitution (meq/g)** 0.8-1.5 meq/g (Elemental analysis of Chloride)  
**% DVB** 1% DVB  
**Storage** Store at RT

**For Laboratory Use Only**