

Chem-Impex International, Inc.

Tel: (630) 766-2112

E-mail: sales@chemimpex.com

Shipping and Correspondence:

935 Dillon Drive

Wood Dale, IL 60191

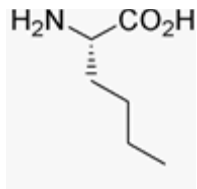
Fax: (630) 766-2218

Web site: www.chemimpex.com

Manufacturing site:

825 Dillon Drive

Wood Dale, IL 60191



Product Specifications

Catalogue Number	00353
Product	L-Norleucine
	L-Nle-OH
	L-2-Aminohexanoic acid
CAS Number	327-57-1
Molecular Formula	C ₆ H ₁₃ NO ₂
Molecular Weight	131.18

Appearance	White to off-white crystalline powder
Solubility	Colorless and clear solution (C=4 in 3N HCl)
Heavy Metals	≤ 10 ppm (as Pb)
Anion	Chloride (Cl) : ≤ 0.02% Sulfate (SO ₄) : ≤ 0.03%
Cation	Iron (Fe) : ≤ 10 ppm Ammonium (NH ₄) : ≤ 0.02% Arsenic (As) : ≤ 1.0 ppm
Optical Rotation	[α] _D ²⁰ = 23 ± 2 ° (C=4 in 6N HCl)
Loss on Drying	≤ 0.05%
Other Amino Acids	Not detected by TLC (the spotted amount 20 μg)
Residue On Ignition	≤ 0.05% (as Sulfate)
Assay	≥ 99%
Storage	Store at RT

For Laboratory Use Only