

Chem-Impex International, Inc.

Tel: (630) 766-2112

E-mail: sales@chemimpex.com

Shipping and Correspondence:

935 Dillon Drive

Wood Dale, IL 60191

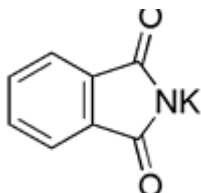
Fax: (630) 766-2218

Web site: www.chemimpex.com

Manufacturing site:

825 Dillon Drive

Wood Dale, IL 60191



Product Specifications

Catalogue Number	00253
Product	Phthalimide potassium salt Potassium phthalamide
CAS Number	1074-82-4
Molecular Formula	C ₈ H ₄ NO ₂ K
Molecular Weight	185.2

Appearance	Slight yellow to white crystalline powder or Light greenish powder
Solubility	Soluble in water (50 mg in 1 mL water)
Melting Point	> 300 °C
Heavy Metals	≤ 50 ppm
Water Content (Karl Fisher)	≤ 0.5%
Related Substances	Phthalimide : ≤ 0.3%
Assay by titration	≥ 98%
Purity by HPLC	≥ 99%
Storage	Store at RT

For Laboratory Use Only