

Chem-Impex International, Inc.

Tel: (630) 766-2112

E-mail: sales@chemimpex.com

Shipping and Correspondence:

935 Dillon Drive

Wood Dale, IL 60191

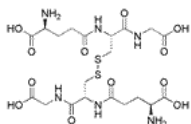
Fax: (630) 766-2218

Web site: www.chemimpex.com

Manufacturing site:

825 Dillon Drive

Wood Dale, IL 60191



Product Specifications

Catalogue Number	00158
Product	Glutathione oxidized (γ -Glu-Cys-Gly) (γ -Glu-Cys-Gly) [Disulfide bridge: 2a-2b] GSSG
CAS Number	27025-41-8
Molecular Formula	C ₂₀ H ₃₂ N ₆ O ₁₂ S ₂
Molecular Weight	612.63

Appearance	White lyophilized powder
Cation	Iron (Fe): \leq 20 ppm Lead (Pb): \leq 10 ppm
Water Content (Karl Fisher)	\leq 5%
Infrared Spectrum	Conforms to structure
Related Substances	GSH (enzym.): \leq 0.5%
Residue On Ignition	\leq 0.5% (800 °C, sulphated ash)
Assay	\geq 95% (Enzymatic, on dry basis)
Purity by HPLC	\geq 98%
Storage	Store at 0-8 °C

For Laboratory Use Only