

Chem-Impex International, Inc.

Tel: (630) 766-2112

E-mail: sales@chemimpex.com

Shipping and Correspondence:

935 Dillon Drive

Wood Dale, IL 60191

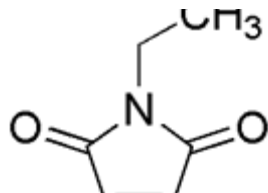
Fax: (630) 766-2218

Web site: www.chemimpex.com

Manufacturing site:

825 Dillon Drive

Wood Dale, IL 60191



Product Specifications

Catalogue Number	00142
Product	N-Ethylmaleimide
	NEM
	1-Ethyl-1H-pyrrole-2,5-dione
CAS Number	128-53-0
Molecular Formula	C ₆ H ₇ NO ₂
Molecular Weight	125.13

Appearance	White to pale yellow crystalline powder
Melting Point	42 - 47 °C
Infrared Spectrum	Conforms to structure
Purity by GC	≥ 99%
Storage	Store at RT

For Laboratory Use Only