

# Chem-Impex International, Inc.

---

**Tel:** (630) 766-2112

**E-mail:** sales@chemimpex.com

**Shipping and Correspondence:**

935 Dillon Drive

Wood Dale, IL 60191

**Fax:** (630) 766-2218

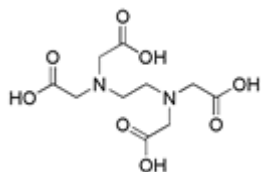
**Web site:** www.chemimpex.com

**Manufacturing site:**

825 Dillon Drive

Wood Dale, IL 60191

---



## Product Specifications

<b>Catalogue Number</b>	00139
<b>Product</b>	<b>Ethylenediaminetetraacetic acid</b> EDTA
<b>CAS Number</b>	60-00-4
<b>Molecular Formula</b>	C <sub>10</sub> H <sub>16</sub> N <sub>2</sub> O <sub>8</sub>
<b>Molecular Weight</b>	292.2

---

<b>Appearance</b>	White crystalline powder
<b>Melting Point</b>	220 °C (dec.) (Approx.)
<b>Heavy Metals</b>	≤ 0.001% (as Pb)
<b>Cation</b>	Calcium (Ca) : ≤ 0.001% Magnesium (Mg) : ≤ 5 ppm Iron (Fe) : ≤ 0.005%
<b>Insoluble</b>	≤ 0.005% (in dilute ammonium hydroxide)
<b>Related Substances</b>	Nitritotriacetic acid : ≤ 0.1%
<b>Assay by titration</b>	99.4 - 100.6%
<b>Grade</b>	ACS reagent
<b>Storage</b>	Store at RT
<b>Additional Information</b>	Identification : To pass test Residue after ignition : ≤ 0.2%

**For Laboratory Use Only**