

Chem-Impex International, Inc.

Tel: (630) 766-2112

E-mail: sales@chemimpex.com

Shipping and Correspondence:

935 Dillon Drive

Wood Dale, IL 60191

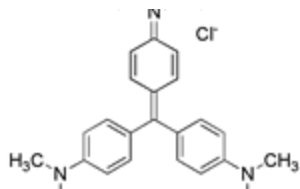
Fax: (630) 766-2218

Web site: www.chemimpex.com

Manufacturing site:

825 Dillon Drive

Wood Dale, IL 60191



Product Specifications

Catalogue Number 00082
Product **Crystal Violet**

Basic violet 3

Gentian violet

CAS Number 548-62-9

Molecular Formula C₂₅H₃₀N₃Cl

Molecular Weight 407.99

Appearance Dark green crystalline powder

Solubility Soluble in alcohol, in glycerin, in chloroform, sparingly soluble in water and insoluble in ether.

Cation Arsenic (As): ≤ 10 ppm
Lead (Pb): ≤ 30 ppm
Zinc (Zn): ≤ 0.05%

Water Content (Karl Fisher) ≤ 7.5%

Insoluble material Alcohol ≤ 1.0% (10 Mg)

Residue On Ignition ≤ 1.5%

Assay by titration 96.0-100.5% (anhydrous basis)

Grade USP

Storage Store at RT

Additional Information Identification: To pass test
Chromatographic purity: ≤ 1.0%

For Laboratory Use Only