

Chem-Impex International, Inc.

Tel: (630) 766-2112

E-mail: sales@chemimpex.com

Shipping and Correspondence:

935 Dillon Drive

Wood Dale, IL 60191

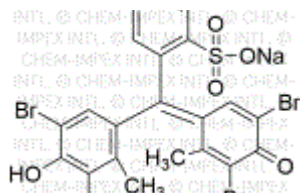
Fax: (630) 766-2218

Web site: www.chemimpex.com

Manufacturing site:

825 Dillon Drive

Wood Dale, IL 60191



Product Specifications

Catalogue Number	00043
Product	Bromocresol green sodium salt 3',3',5',5'-Tetrabromo-3-cresolsulfonephthalein sodium salt
CAS Number	62625-32-5
Molecular Formula	C ₂₁ H ₁₃ Br ₄ O ₅ SNa
Molecular Weight	720.02

Appearance	Dark brown greenish powder
Clarity & Color	To pass test
Solubility	Slightly soluble in water
Melting Point	218 - 219 °C
Visual Transition Range	From pH 3.8 (yellow) to pH 5.4 (blue)
Grade	ACS reagent
Storage	Store at RT

For Laboratory Use Only